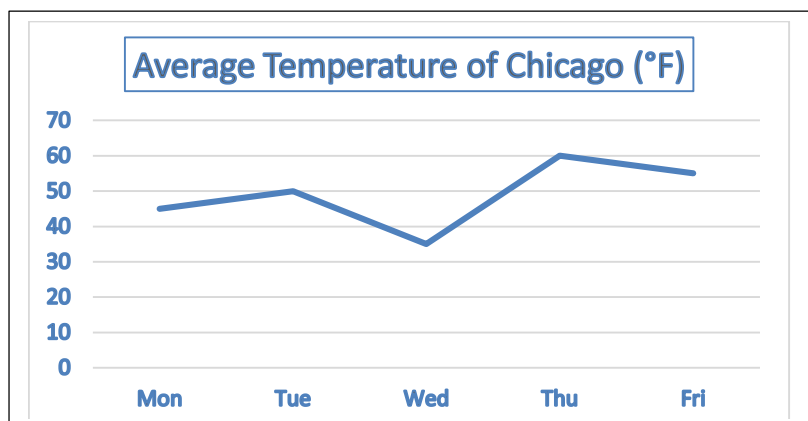


Solve Word Problems Involving Line Graphs – I

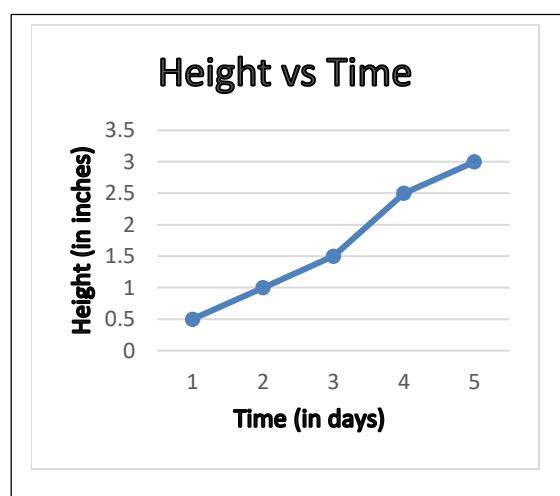
Give what is asked in each item and write your answers on the space provided.

1. Mila recorded the average temperatures in the second week of July 2020 using this line graph. Refer to the graph in answering the questions that follow.



- Which day was the coldest? _____
- Which day was the warmest? _____
- What was the temperature on Tuesday? _____
- The temperature on Thursday was _____°F more than the temperature on Wednesday.
- What is the range of the average temperature on all 5 days? _____

2. Rey was recording the height of a corn plant every day. He drew this line graph based on his records. Use the graph to answer the questions that follow.



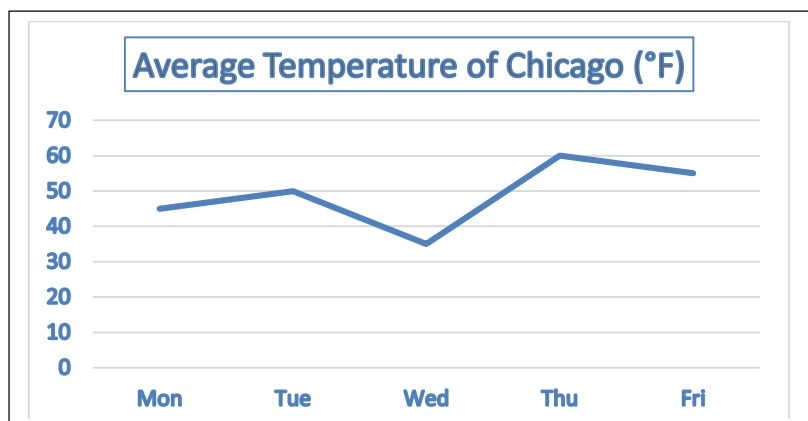
- What is the plant's height on the third day?
- How much inches did the plant grow from Day 1 to Day 5?
- How tall was the plant when Rey started recording its height?
- On which day was the biggest increase in height of the plant recorded?

Answers:

-
-
-
-

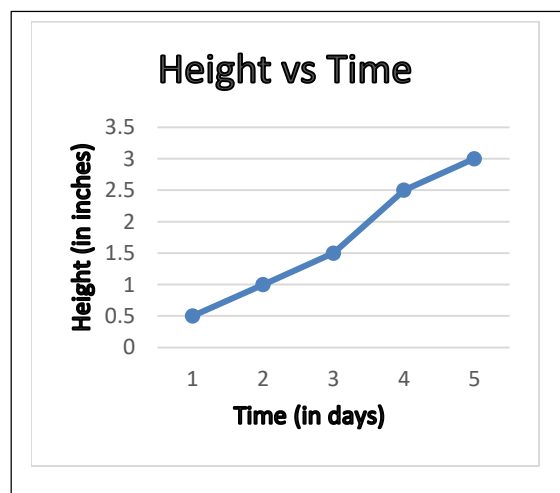
Give what is asked in each item and write your answers on the space provided.

1. Mila recorded the average temperatures in the second week of July 2020 using this line graph. Refer to the graph in answering the questions that follow.



- Which day was the coldest? Wednesday
- Which day was the warmest? Thursday
- What was the temperature on Tuesday? 50 °F
- The temperature on Thursday was 25 °F more than the temperature on Wednesday.
- What is the range of the average temperature on all 5 days? 25 °F

2. Rey was recording the height of a corn plant every day. He drew this line graph based on his records. Use the graph to answer the questions that follow.



- What is the plant's height on the third day?
- How much inches did the plant grow from Day 1 to Day 5?
- How tall was the plant when Rey started recording its height?
- On which day was the biggest increase in height of the plant recorded?

Answers:

- 1.5 inches
- 2.5 inches
- 0.5 inch
- Day 4